



MONTHLY MEMBERSHIP PROGRESS REPORT

District 318 C

Results as of: 02/28/2019

GMT: N S SANKAR

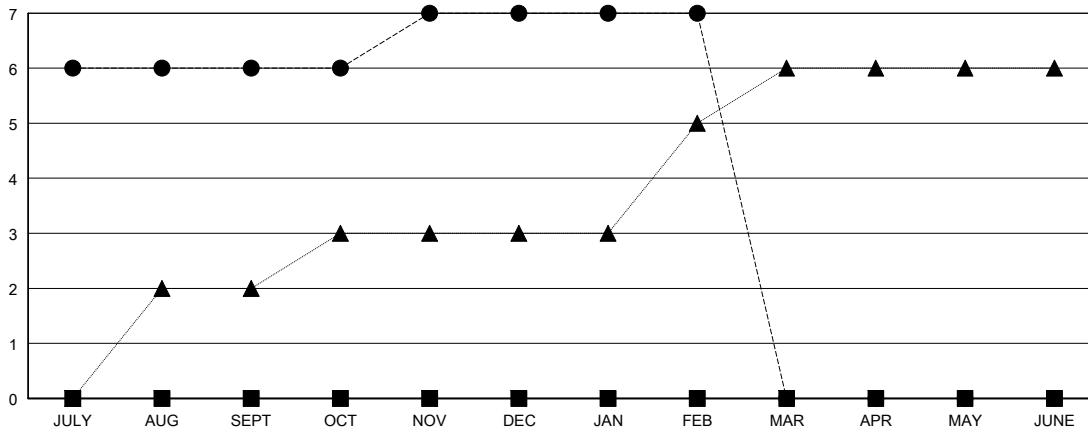
LOCATION INDIA

GMT CA

Clubs			
RESULTS FOR 2018-2019			
QUARTER	NEW CLUB GOAL	NEW CLUBS	DROPPED CLUBS
JULY/AUG/SEPT	0	6	2
OCT/NOV/DEC	0	1	1
JAN/FEB/MAR	0	0	0
APR/MAY/JUNE	0	0	0

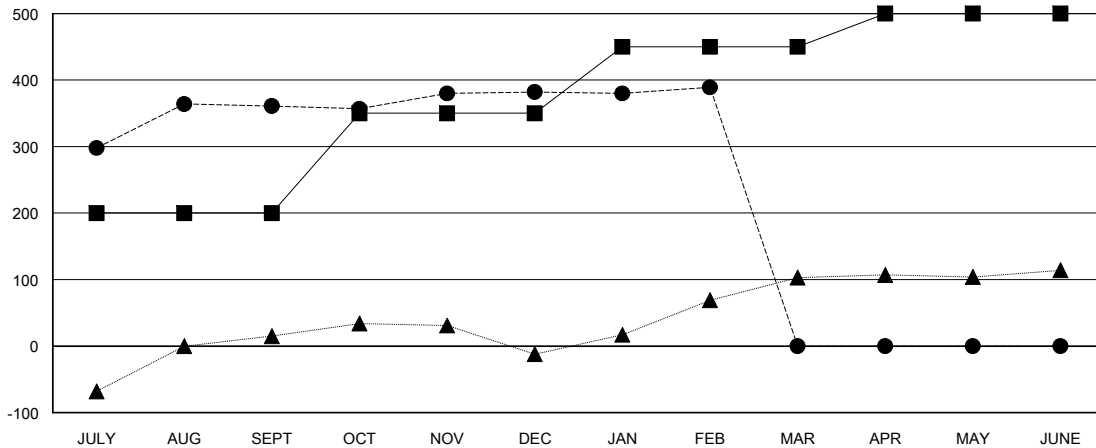
Members			
RESULTS FOR 2018-2019			
QUARTER	MEMBER GROWTH NET GOAL	MEMBER GROWTH ACTUAL	DROPPED MEMBERS ACTUAL (including transfers)
JULY/AUG/SEPT	200	472	81
OCT/NOV/DEC	150	74	51
JAN/FEB/MAR	100	18	10
APR/MAY/JUNE	50	0	0

GOALS AND ACTUAL NEW CLUBS CUMULATIVE



- - CURRENT YEAR GOALS FOR NEW CLUBS
- - CURRENT YEAR ACTUAL NEW CLUBS
- ▲ - LAST YEAR ACTUAL NEW CLUBS

GOALS AND ACTUAL MEMBERS CUMULATIVE



- - MEMBER GROWTH NET GOAL
- - MEMBER GROWTH ACTUAL
- ▲ - LAST YEAR MEMBERSHIP ACTUAL

DROPPED CLUBS: 3	79 CLUBS OF 118 ADDED 1 OR MORE NEW MEMBERS	<u>GENDER DISTRIBUTION</u>
<u>DROPPED MEMBERS</u>	CLICK HERE FOR CUMULATIVE MEMBERSHIP DATA	MALE 3,616 (85.42%)
		FEMALE 617 (14.58%)
		Women Percentage Fiscal Year Goal: 0%
		TOTAL FAMILY UNIT MEMBERS 1,145
DECEASED 12		FAMILY MEMBERS PAYING HALF DUES 600
CLUB CANCELLED 17		
OTHER 112		
TOTAL 141		